

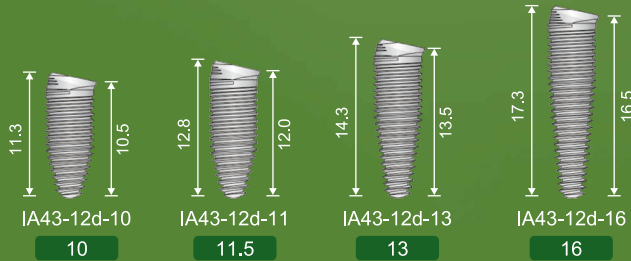
# Co-Axis 4.3 / 5.0 mm

## Implant System

前牙美學最佳應用系統及提供臨床角度修正  
應用於骨型態特殊病歷。



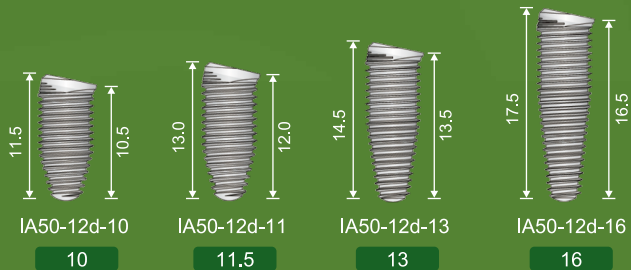
Ø 4.3 mm



Co-Axis 4.3 平台接 3.5 套件 (平台內縮)



Ø 5.0 mm

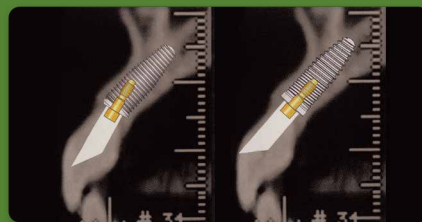


Co-Axis 5.0 平台接 4.3 套件 (平台內縮)

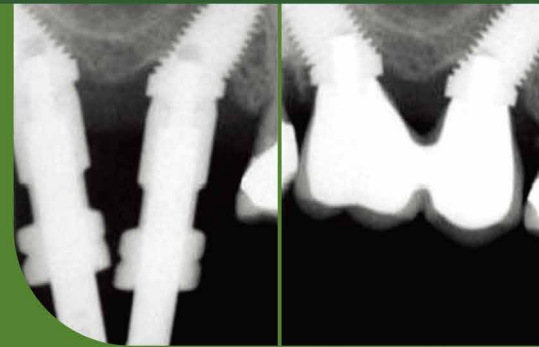
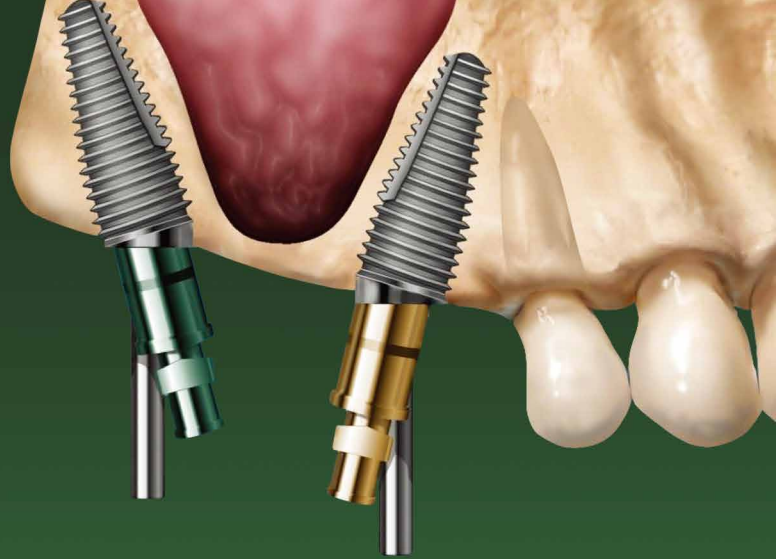
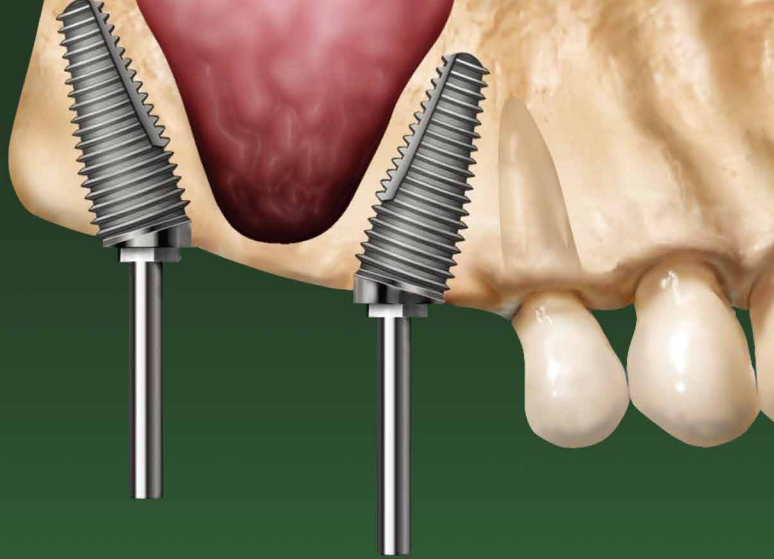
Co-Axis Ø 4.3 & 5.0 mm 植體規格表

	直徑	長度	接二階平台
	Ø 4.3 mm	10.5 mm	3.5 mm
	Ø 4.3 mm	12.0 mm	3.5 mm
	Ø 4.3 mm	13.5 mm	3.5 mm
	Ø 4.3 mm	16.5 mm	3.5 mm
	Ø 5.0 mm	10.5 mm	4.3 mm
	Ø 5.0 mm	12.0 mm	4.3 mm
	Ø 5.0 mm	13.5 mm	4.3 mm
	Ø 5.0 mm	16.5 mm	4.3 mm

- Co-Axis 12° 全新的植體設計 / 平台內縮
- 幫助植牙時在美觀區域製作鑲復體時更容易
- 獨特的斜面設計可用於臨床上不同牙位的角度需求



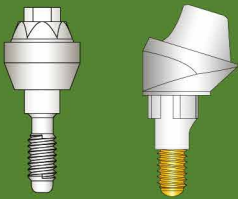
植體角度使假牙製作更美觀，如同自然牙一般



## Angled Correction to Overcome Anatomical Limitations

Co-Axis is the first threaded dental implant available in a 12° and 24° angle correction. These innovative, angled implants allow implant surgeons and other dental professionals to utilize existing bone while maintaining the restorative platform at an angle that ensures an optimal esthetic result.

## Compact Conical Abutment Components



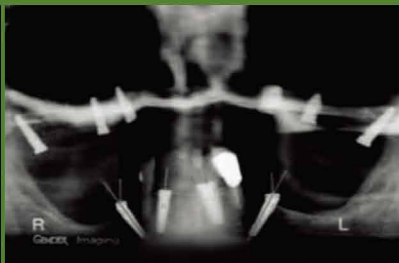
Compact Conical Abutment

Description

Cuff Height

Catalog #

Ø4.3 mm, Straight	1.0 mm	MC-L-43-1
Ø4.3 mm, Straight	2.0 mm	MC-L-43-2
Ø4.3 mm, Straight	3.0 mm	MC-L-43-3
Ø4.3 mm, Straight	4.0 mm	MC-L-43-4
Ø4.3 mm, Straight	5.0 mm	MC-L-43-5
Ø4.3 mm, 17° Angled	2.0 mm	MCL-43-17d2
Ø4.3 mm, 17° Angled	4.0 mm	MCL-43-17d4



立即擁有假牙鑲復套件

Tri-Nex & Co-Axis Implant System

